

glow

Instruction Manual Glow Ball Products



WARNING:

THIS PRODUCT AND THE REMOTE-CONTROL UNIT FOR THIS PRODUCT USES BUTTON CELL BATTERIES. HAZARDOUS IF SWALLOWED. SWALLOWING THE BATTERY MAY LEAD TO SERIOUS INJURY OR DEATH IN AS LITTLE AS 2 HOURS DUE TO INTERNAL CHEMICAL BURNS.

IF YOU SUSPECT A CHILD HAS SWALLOWED A BUTTON BATTERY IMMEDIATELY CALL THE 24-HOUR POISONS INFORMATION LINE ON 13 11 26 FOR FAST EXPERT ADVICE.

REGULARLY EXAMINE THE REMOTE-CONTROL UNIT AND ENSURE THE BATTERY COMPARTMENT IS CORRECTLY SECURED. DO NOT USE IF NOT TIGHTLY SECURED. DISPOSE OF ALL USED BATTERIES IMMEDIATELY AND SAFELY IN A MANNER THAT THEY CANNOT BE RETRIEVED BY SMALL CHILDREN. FLAT BATTERIES ARE STILL DANGEROUS.

THIS PRODUCT IS NOT A TOY.



WARNING!

This product is not a toy or to be used as a floatation device.

©LED Glow Illumination 2023

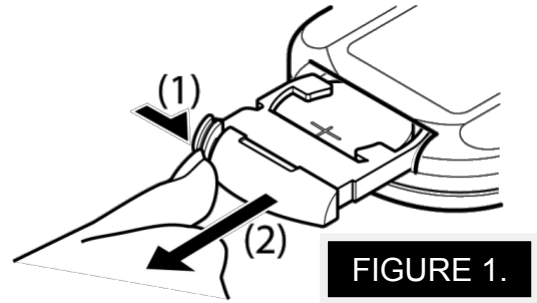
What is included

- The Glow Sphere Product – GL-RC80
- The Remote-Control Unit
- Instruction Manual (via download)

The Remote



When you use the remote control, you should take off the clear plastic and remove the clear plastic card on the bottom of the remote control. The remote-control unit is pre-installed with the batteries.



As this remote-control unit operates with 1 x CR2025 Button Battery it is extremely important that the battery compartment is inserted all the way in and that it locks in to place. Opening the compartment requires two independent and simultaneous movements: (1) Push the rigid edge rightward (2) At the same time pull the compartment out (Figure 1).

Getting Started

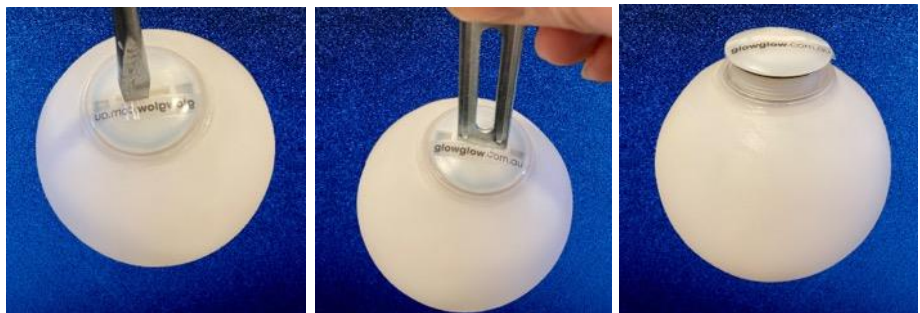
1. Activating the batteries

As this product operates with 2 x CR2032 Button Batteries it is extremely important that the battery compartment is **ALWAYS** kept screwed in all the way tightly whether it is being used or not.

The batteries in the product have been pre-installed and are stopped from operating by a round protection disk. To remove the disk, follow these steps:

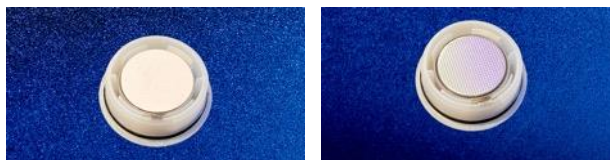
Step 1

You will require a flat head screw driver or similar tool to unscrew the battery compartment of the product.



Step 2

Once you have opened the compartment remove the protection disk



Step 3

Then screw the compartment back in making sure that it is screwed in all the way and tight.



Remember

When the product is not in use either insert the protection disk back in place and tightly screw back in or remove the batteries and store in a safe place **out of reach of children.**

2. Turning on

Once the batteries have been activated and the battery compartment is screwed in tightly all the way, click the ON button on the remote control.

3. Using the product

The product has 4 lighting functions; on (single colour selection), FADE: automatic colour change (rotates through the different colours), JUMP: automatic colour change (jumps through the different colours) and FLASH: flashes on and off to the last colour selected.

4. Brightness adjustment

The brightness is fixed automatically in the highest brightness when it is turned on, changing the brightness can be done by clicking the BRIGHT minus or BRIGHT positive



buttons on the remote control.



5. Single colour choice

There are 13 colours including; red, green, blue, orange, white, pink and purple. The colour light can be fixed by clicking the colour button of your choice on the remote control.

6. Turning off

Click the OFF button on the remote control.

7. Placing in water

This product is designed to be used in water as a floating feature. To use in water simply place gently on the water surface with the battery compartment section of the product facing down. Never throw this product in to water. This product is not to be left in water for extended long periods of time.

8. Hanging your Glow product

Your product has the ability to be hung. On the base of the product there is a thread section. You will be able to thread through either a Glow Spring hook or fishing wire to hang the product.

Frequently Asked Questions

How long will my Glow product last?

The amount of time your Glow product will last will vary depending on the setting you select and the quality of the batteries used. Most Glow battery products will last from 6 to 12 hours or more.

How do I clean my Glow product?

This Glow product is made of an easy clean material; you will be able to clean it with a Glow cleaning and protection pack (available separately from Glow) or a damp cloth.

Can Glow products be used underwater?

No. Glow products should never be submerged in any liquids including water. This product however is designed to float on the top of the water, but is not to be taken underwater and is definitely not to be used as a children's pool toy.

Can this product be left outside in the sun?

Yes it can. The materials it is constructed from include UV protection, but like all products left outside, over time it may discolour. To get the most out of your Glow product, it is recommended that Glow products are not left outside without cover for long periods of time and that they are regularly cleaned using the Glow cleaning and protection pack, as this cleaning solution also contains UV protection.

What do I do if my Glow product stops working?

Please contact us at support@glowglow.com.au and we will assist you with the trying to fix the issue. If the product is still under warranty, we will arrange for repair, replacement or refund. If the product is out of warranty, we can arrange for repair at an additional cost if a repair is available.

Warranty Information

The benefits conferred by this warranty are in addition to all implied warranties, other rights and remedies in respect of the product which the consumer has under the Consumer and Competition Act and similar State and Territory Laws within Australia. The original purchaser of this LED Glow Illumination product is provided with the following warranty, subject to the following conditions. This product is warranted for a period of 1 year from the date of purchase for all parts defective in workmanship or materials. Should an instance occur where the product is deemed faulty, the product will need to be returned to LED Glow Illumination to be repaired, replaced or refunded. In order to obtain this warranty, proof of purchase must be supplied.

Warranty Conditions

1. This warranty is only valid for products used according to the manufacturer's instructions.
2. This product must not be opened, modified or changed in any way. To do so will void the product warranty.
3. operation must be with the battery type as specified on the product or within the product manual. Using incorrect batteries is likely to damage the internal electronic components which is not covered by the product warranty.
4. The manufacturer does not accept liability for any direct or consequential damage, loss or other expense arising from misuse or incorrect installation, assembly and operation of the product including the use of batteries not approved or warranted by LED Glow Illumination.
5. Warranty will only be given where proof of first hand purchase is provided, e.g. original invoice.
6. Not designed or warranted for industrial or commercial use unless agreed upon by LED Glow Illumination prior to sale.
7. Warranty is not transferrable to second hand buyers.
8. NQR (Not Quite Right) Glow products are warranted for a period of 6 months.

Contact



LED Glow Illumination

support@glowglow.com.au
www.glowglow.com.au